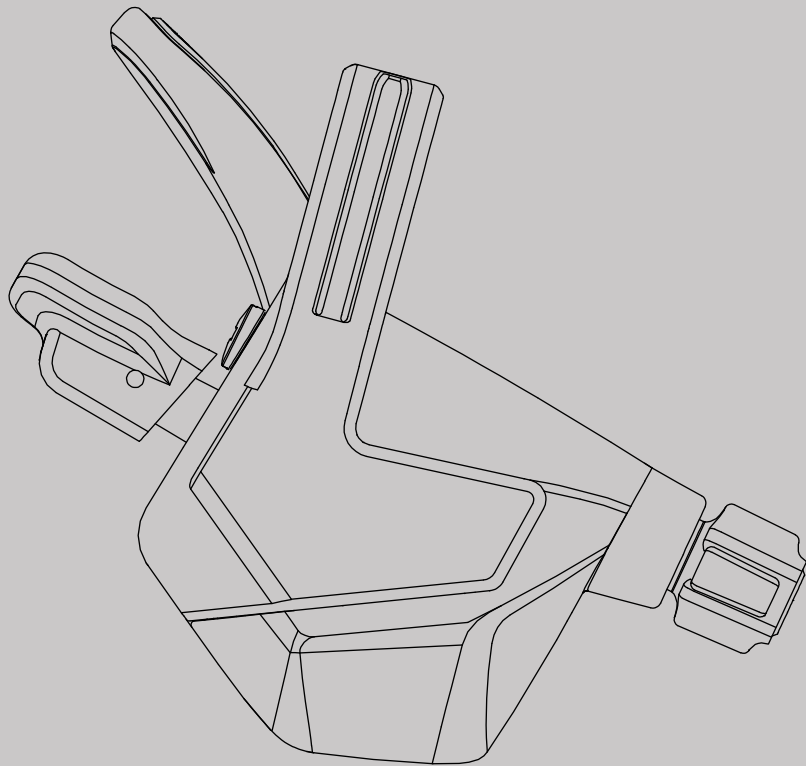


microSHIFT

Trail Trigger Shifter User Manual

TRAIL TRIGGER



Important Notice



REMINDER

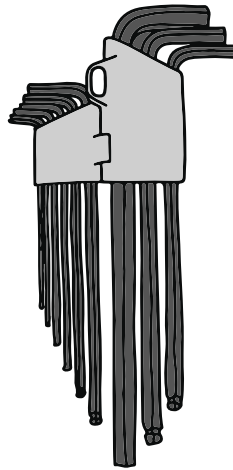
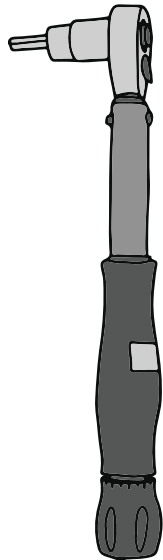
Before installing the products, please read and understand the installation procedures. Improper installation can lead to premature product failures or even injuries. If you have any questions on how to install, please contact us or consult with a professional bicycle mechanic.

INDEX

Tools and Supplies	3
Shifter Positioning Procedures	4
Setup the Cockpit	4
Proper Shifter Position	5
Horizontal Positioning	7
Rotational Positioning	8
Tightening the Shifter	9
Shift Cable Installation Procedures	10
Cable Routing	10
Proper Housing Length	12
Exploded Diagram & Service Parts	13

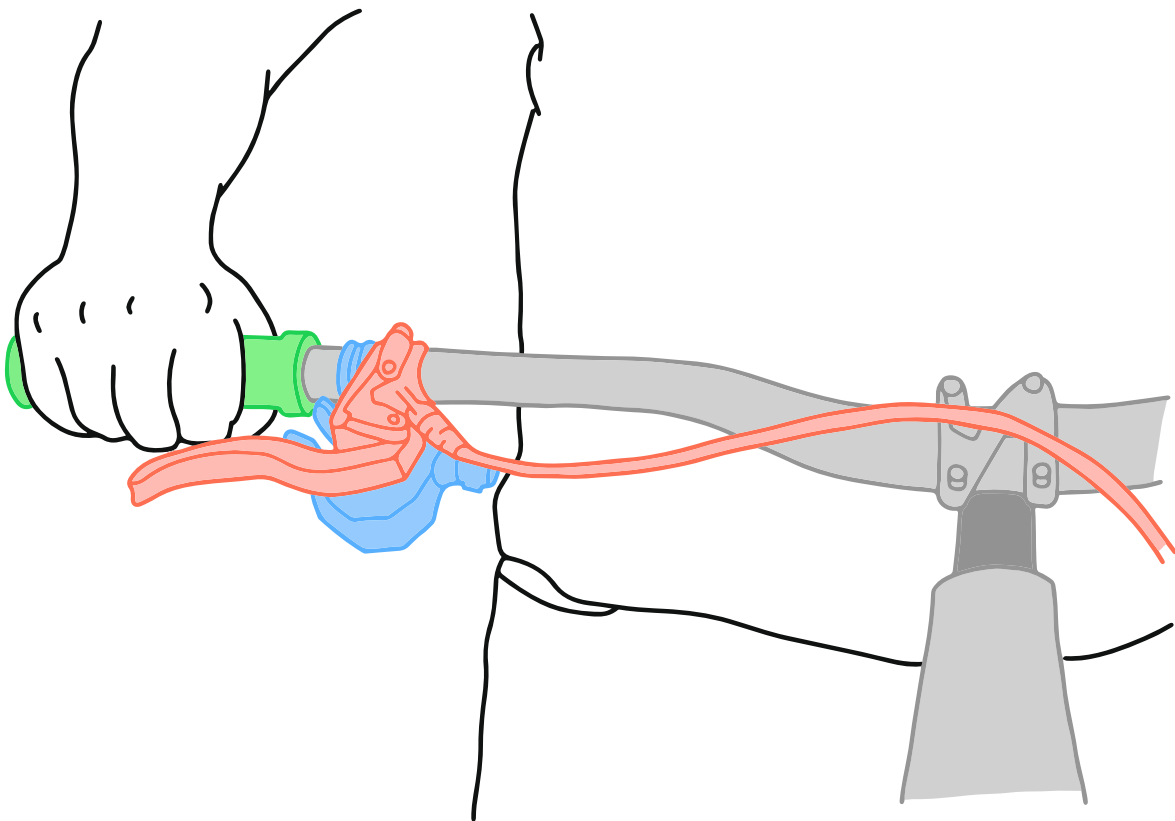
Tools and Supplies

1. Torque wrench
2. 4mm Hex bit
3. Allen wrenches



1. Setup the Cockpit

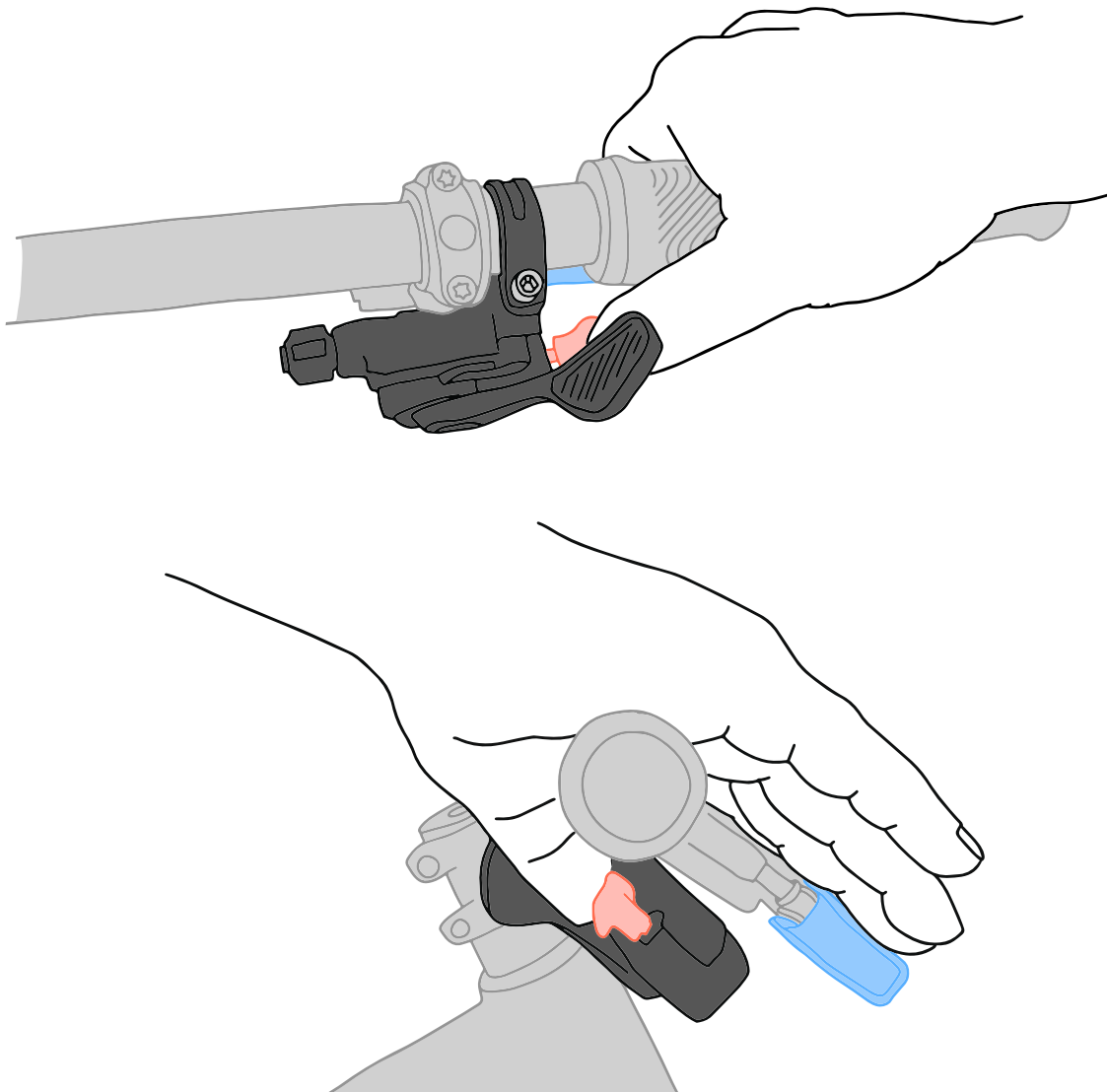
Start by standing over the bike on flat ground. Install **the brake levers**, **the shifter**, and **the grip** with clamps loosened. Adjust **the brake levers** to your preference.



2. Proper Shifter Position

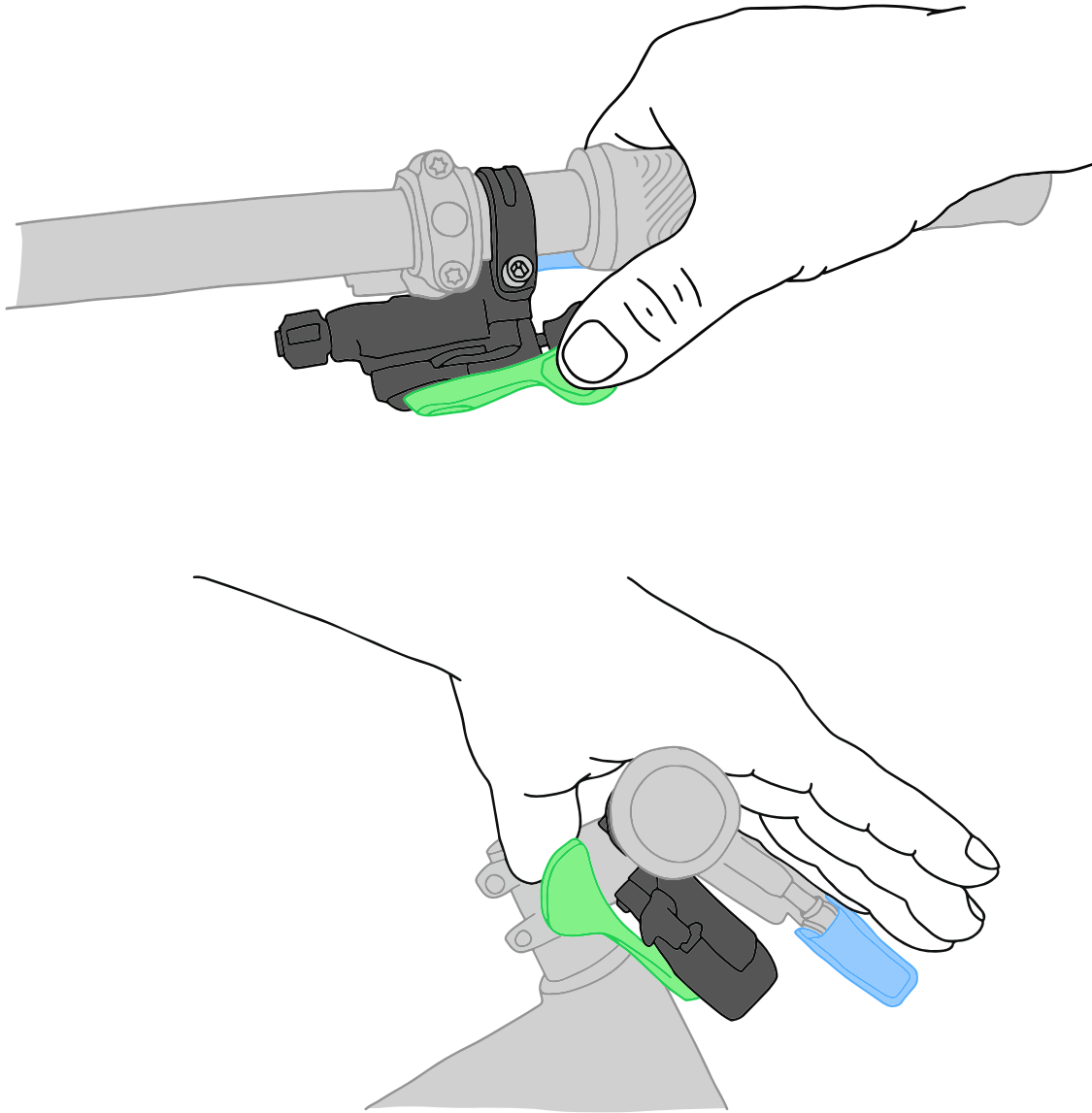
Part I

Put your hand in your normal riding position. With your index finger on **the brake lever**, test out the shifter position of both **the upper shift lever and lower shift lever** with your thumb. You should be able to reach both levers easily without losing your grip. Repeat step 3 & 4 until the setup is comfortable.



2. Proper Shifter Position

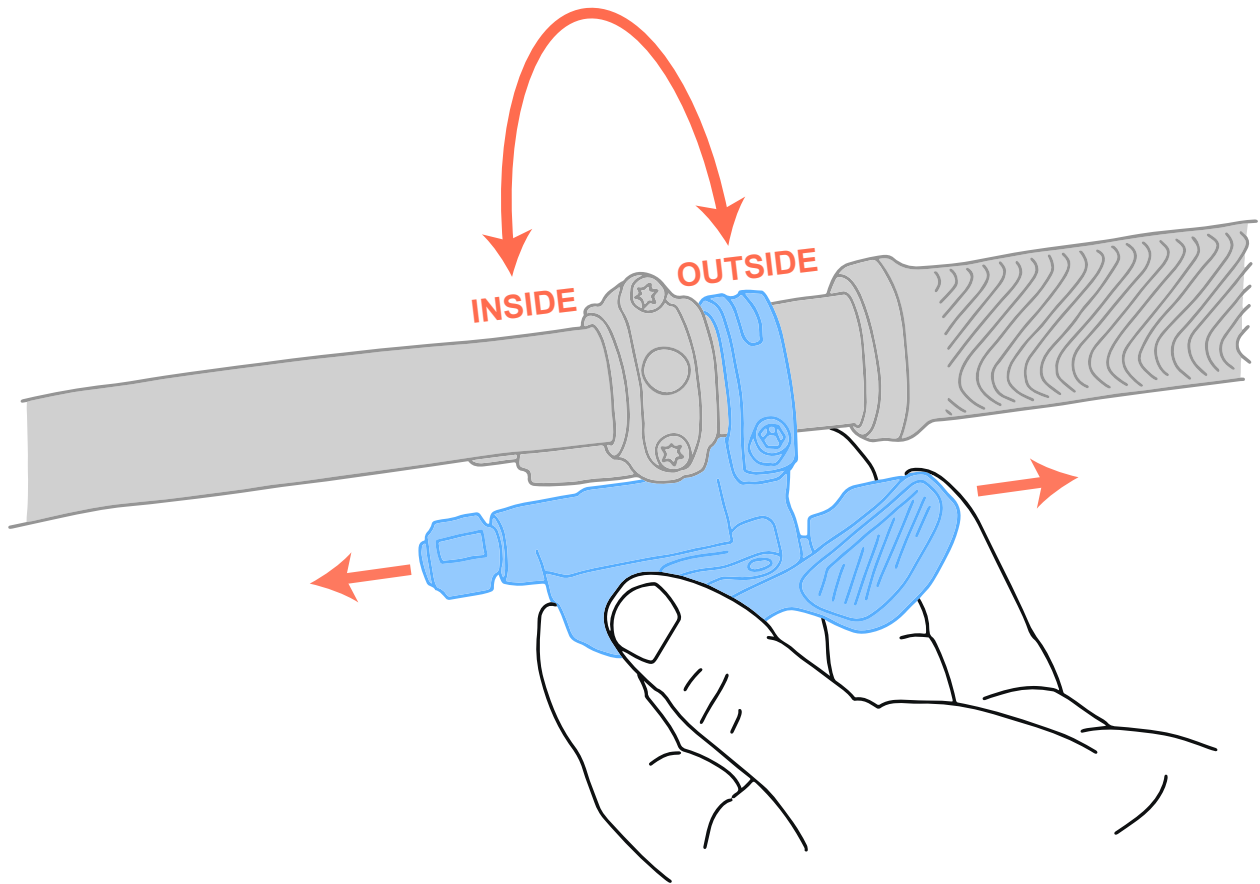
Part II



Proper setup of the Trail Trigger shifter is very individual. These instructions will give you a good starting point, but you may need to fine-tune the position after actual riding.

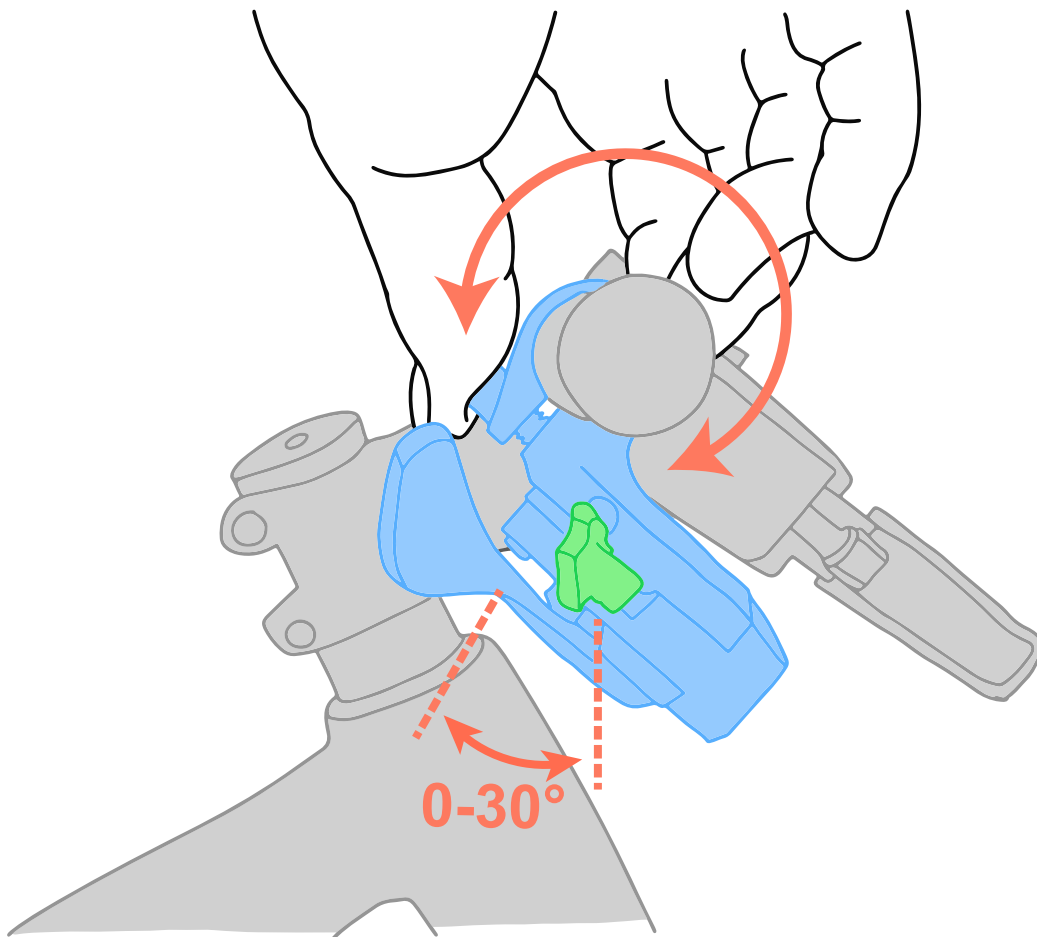
3. Horizontal Positioning

To position the shifter horizontally, move **the shifter left and right** along the handlebar. You can place the shifter on **the inside or the outside** of the brake lever. Repeat the adjustment until the setup is comfortable (Step 2).



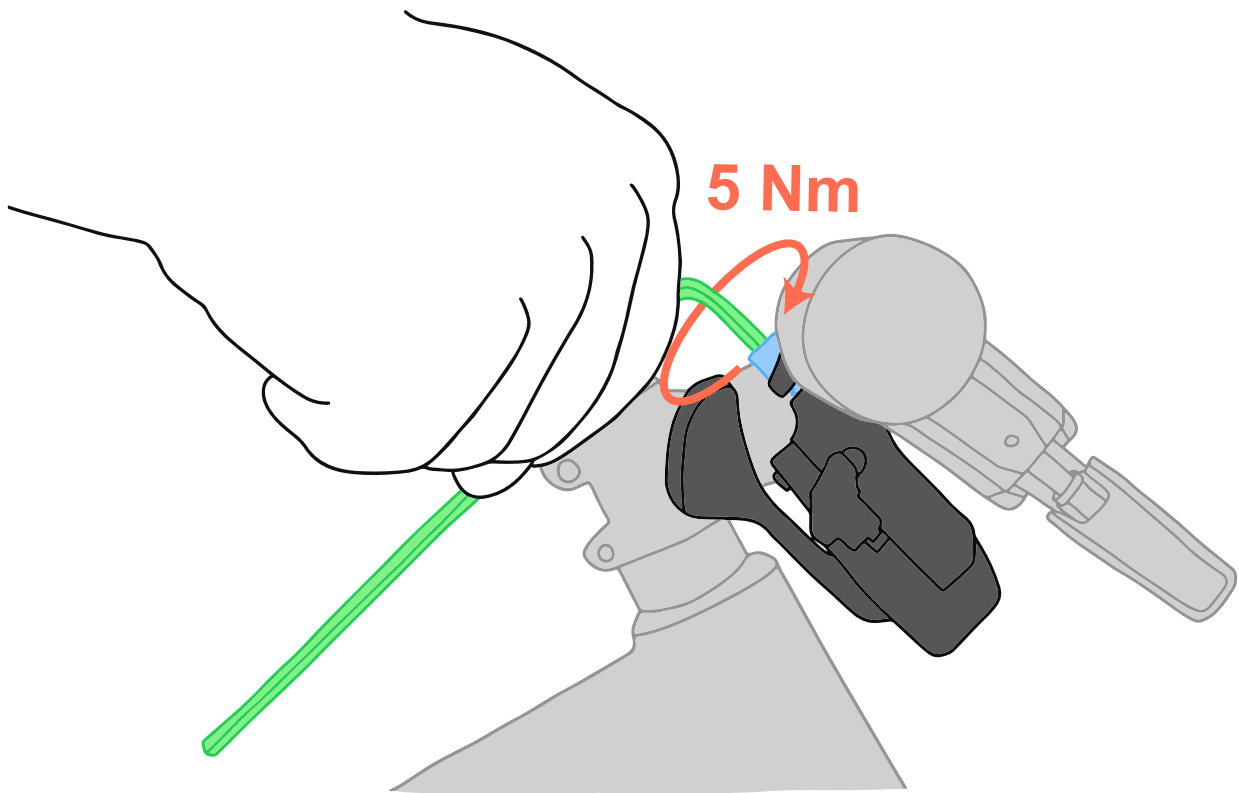
4. Rotational Positioning

Rotate **the shifter** around the handlebar. A good starting point is to rotate until **the upper shift lever** is **0-30 degrees from vertical**. Repeat the adjustment until the setup is comfortable (Step 2).



5. Tightening the Shifter

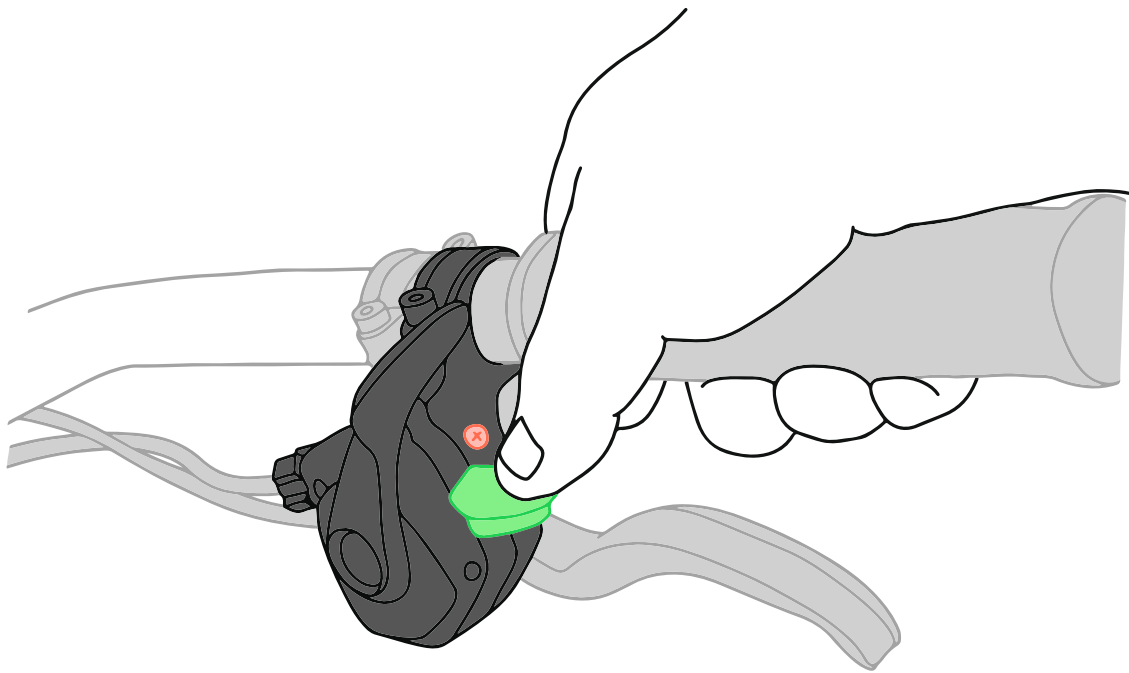
Tighten the **clamp bolt to 5 Nm** using a **4mm hex wrench**.



1. Cable Routing

Part I

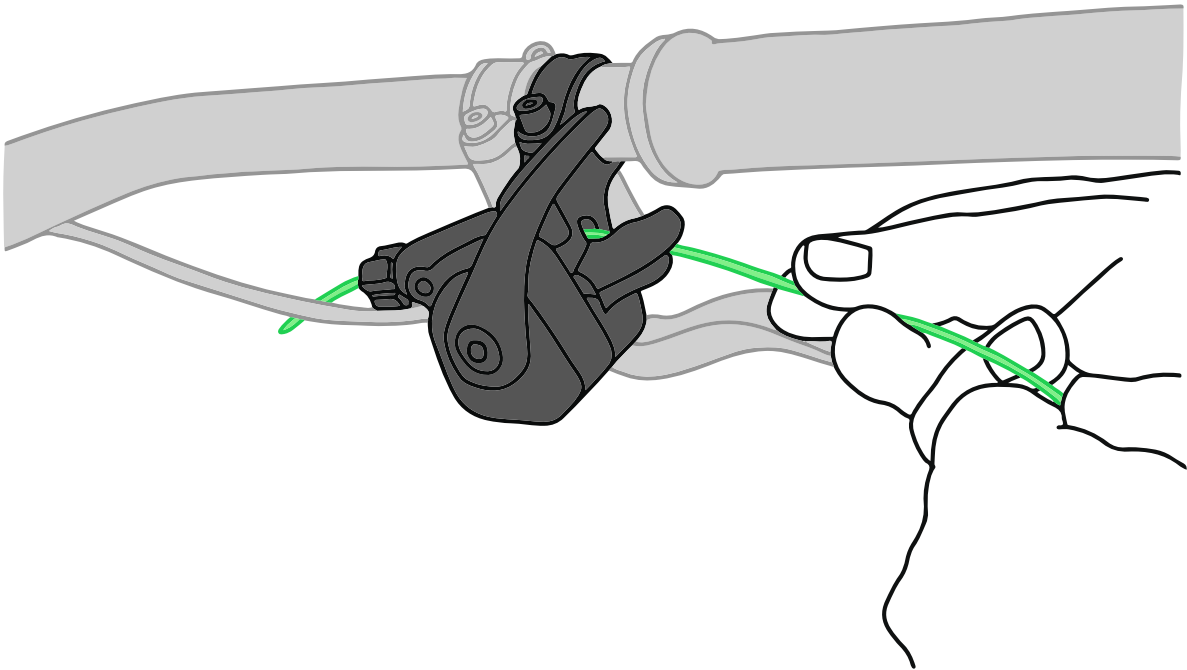
Before routing the cable, press **the upper shift lever** to shift all the way to the highest gear. Remove **the cable cap**.



1. Cable Routing

Part II

Route **the cable** into the cable port above the upper trigger and out through the barrel adjuster.

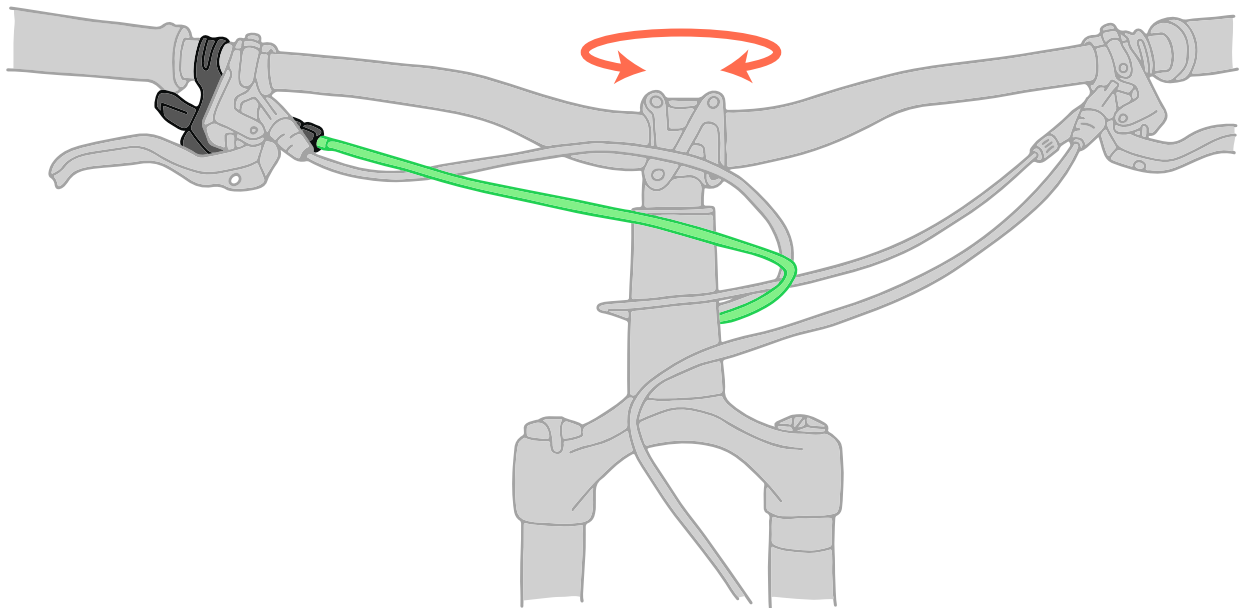


2. Proper Housing Length

For best shifting performance, avoid sharp bends in **the housing** and make sure **the housing** is long enough to freely **rotate** the handlebar back and forth.



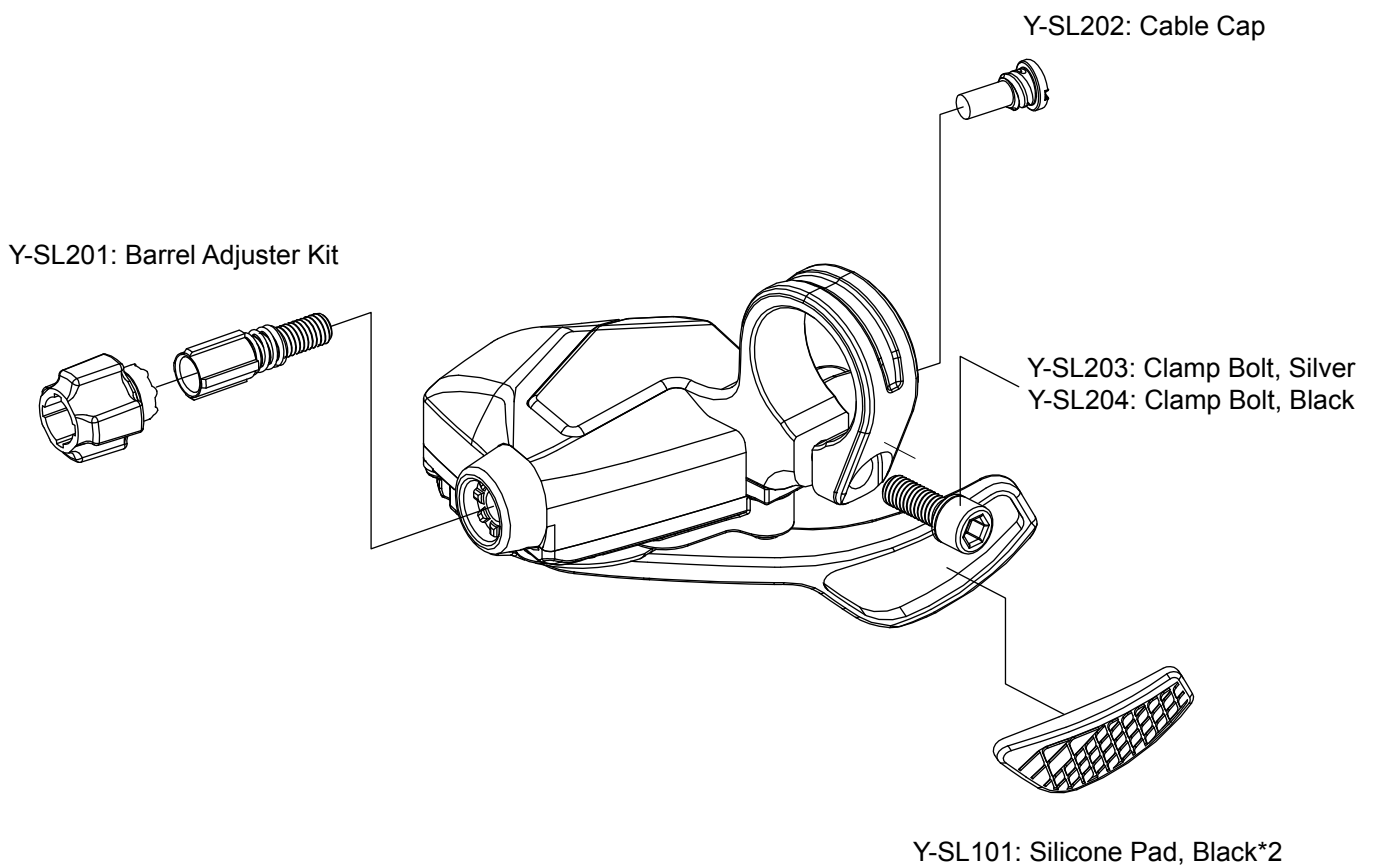
For detailed instructions on cable routing, consult instructions from your frame manufacturer.



Exploded Diagram & Service Parts



Silicone Pads only applicable to models: SL-M9605-R,
SL-M9295-R



microSHIFT

www.microSHIFT.com

International
service@microSHIFT.com.tw

North America
service@microSHIFT.com